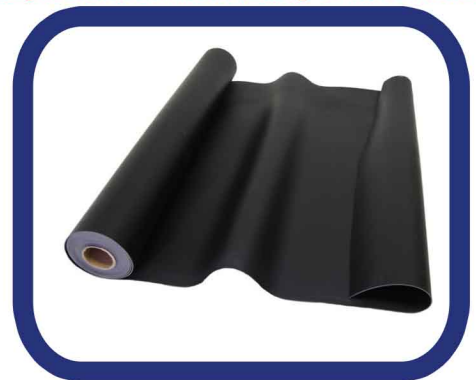




# Mass Loaded Vinyl Sound Barrier

**The mass of a partition is the major factor in it's ability to block sound.**

**MetroFlex's Mass Loaded Vinyl Sound Barrier product is a flexible high temperature fused vinyl that resists the passage of sound waves and reduces the transmission of airborne noise. MetroFlex MLV is an extremely dense product that is only 1/8" thick while weighing 1 lb. per square foot.**



**MetroFlex Mass Loaded Vinyl Sound Barrier**

**MetroFlex Mass Loaded Vinyl Sound Barrier is most commonly used to add mass and sound damping to building structures including wall, ceilings, and floors. Other applications include fences, on machinery, household appliances, drain pipes, doors, and over windows. MetroFlex MLV can be applied to almost any situation where unwanted noise needs to be kept out of an area.**

**DISTRIBUTED ONLINE BY:  
www.BuyInsulationProducts.com**

### Noise Transmission Loss (Db) / Frequency (Hz)

HERTZ	125	250	500	1000	2000	4000	STC
MF-10	16	17	22	27	31	36	26

**Per ASTM E-90 E413-87**

### Typical Physical Properties

- Weight:** 1 lb./sq. ft.
- Thickness:** 1/8"
- Color:** Black
- Surface:** Smooth
- Tensile Strength:** 400 psi
- Tear Strength:** 70 lbs./in.
- Ultimate Elongation:** 200%
- Flammability:** SE "0" in/min.
- Temperature Range:** -40° - 180° F



### Installation for Wall Structures

1. Measure the height of the wall and cut the MLV the height of the wall with a razor knife or sharp scissor.
2. The width of the material is 48", which will cover 2 sections of 24" wide framing or 3 sections of 16" wide framing. (attempt to have joints land on studs if possible).
3. Drape the strip of MLV to be intalled from the top of the wall making sure the MLV is hanging straight. Hammer in 4-8 MetroFlex MLV Nails into the top wooden header/joist.
4. Use MetroFlex MLV Nails to attach the rest of the MLV to the studs all the way to the floor.
- 5a. If two pieces of MLV meet on the stud, cut the pieces so they meet flush in the middle of the stud (do not overlap on a stud). Then use BOSS 826 Acoustical Sound Sealant to seal the gap on the stud.
- 5b. If two pieces of MLV do not meet on a stud, overlap the two pieces of MLV and seal with a mixture of BOSS 826 Acoustical Sound Sealant and duct tape. (cut out overlapping material on top and bottom of wall so drywall is not uneven when installed over the MLV.
5. Caulk all gaps and spaces that are left exposed, especially the space between the ceiling and the MLV as well as the floor and the MLV. Any gaps left exposed will reduce the structural STC rating, and create a sound channel through that opening.

### Standard Roll Size

**MF-10 = 48" x 25ft / 100sf**

**Roll Weight - 105 lbs**

**TO ORDER CALL 973-826-8134**

**www.BuyInsulationProducts.com**